

Disconnected Install

The Disconnected version of the iPipeline Velocity Platform will allow you to run this web application on your own machine when you are 'Disconnected' from the internet. The following information will assist you in successfully completing the installation.

Running the Install

Install from CD

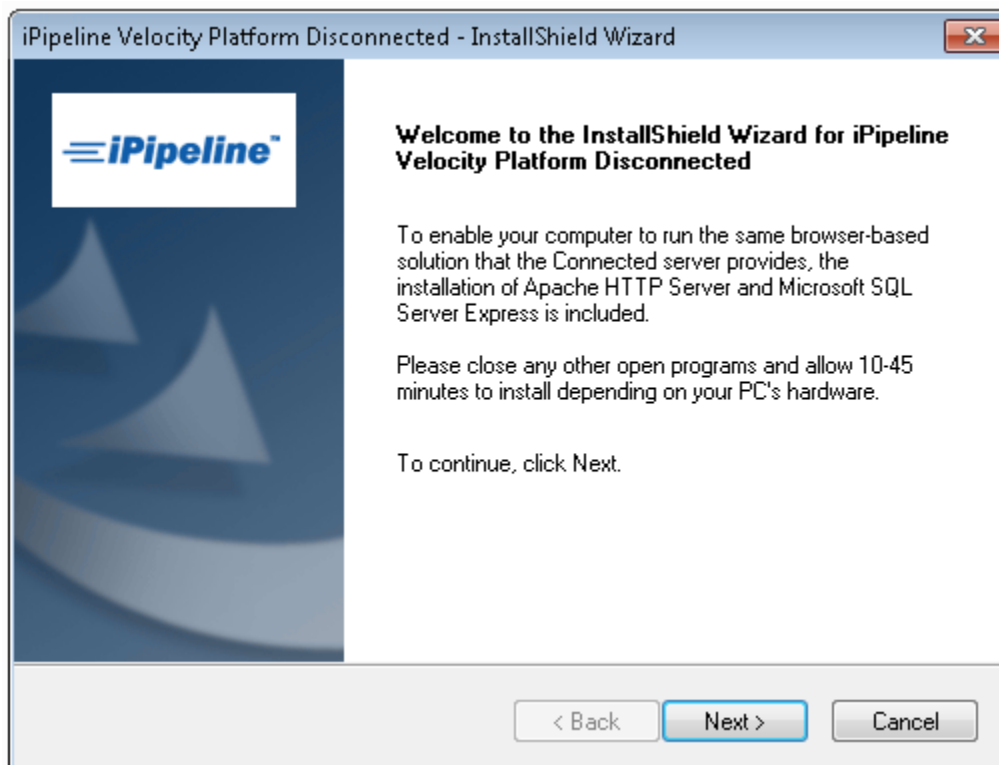
The autorun feature should automatically launch the Installation wizard when you insert the CD into the CDROM drive. If this feature is disabled on your machine and it doesn't auto start, you can start the install by typing the following command into the Run dialog:
D:\setup.exe (Where D is the drive letter of the CDROM drive.)

Install from Exe

If the installation was downloaded from the Internet as an Exe file, you simply need to double-click on the Exe file and the self-extraction and install will proceed.

Installation InstallShield Wizard

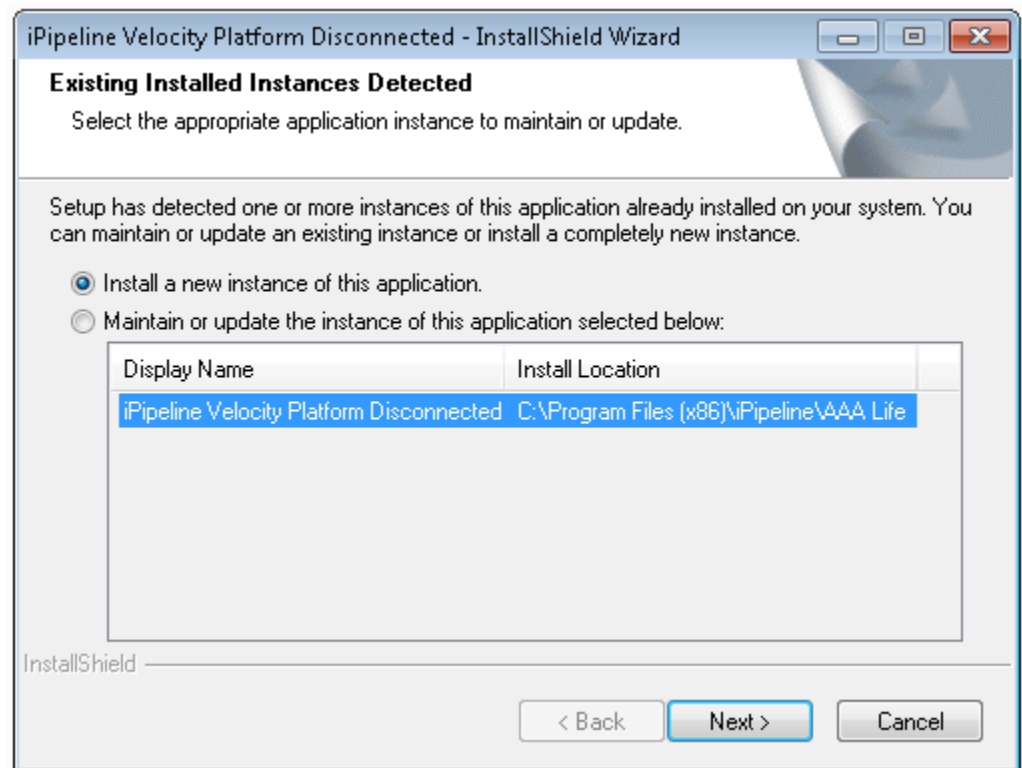
The installation setup.exe just has a few wizard screens. The Welcome screen asking you to close all other programs that may currently be running.



Tip: Not only will closing other programs reduce the chance of issues during the install but the install will also run much quicker.

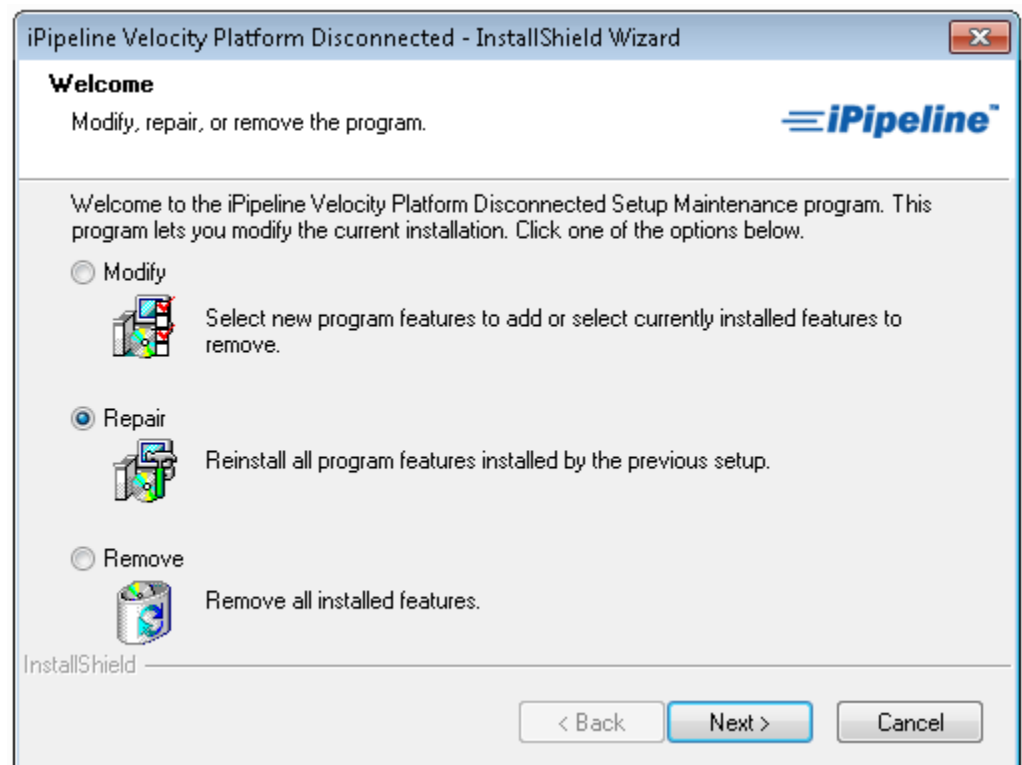
If a previous installation of the Velocity Platform is detected you will be presented with the following screen instead. This will allow an upgrade to an existing installation or a new install to a different directory.

Note: If the previous install is version 7.4 or older, it will not show up as an option to upgrade. It will need to be uninstalled before running the new install.



If an update to an existing install was selected, the following screen will require ask you to select Modify or Repair. Both options will simply update the application.

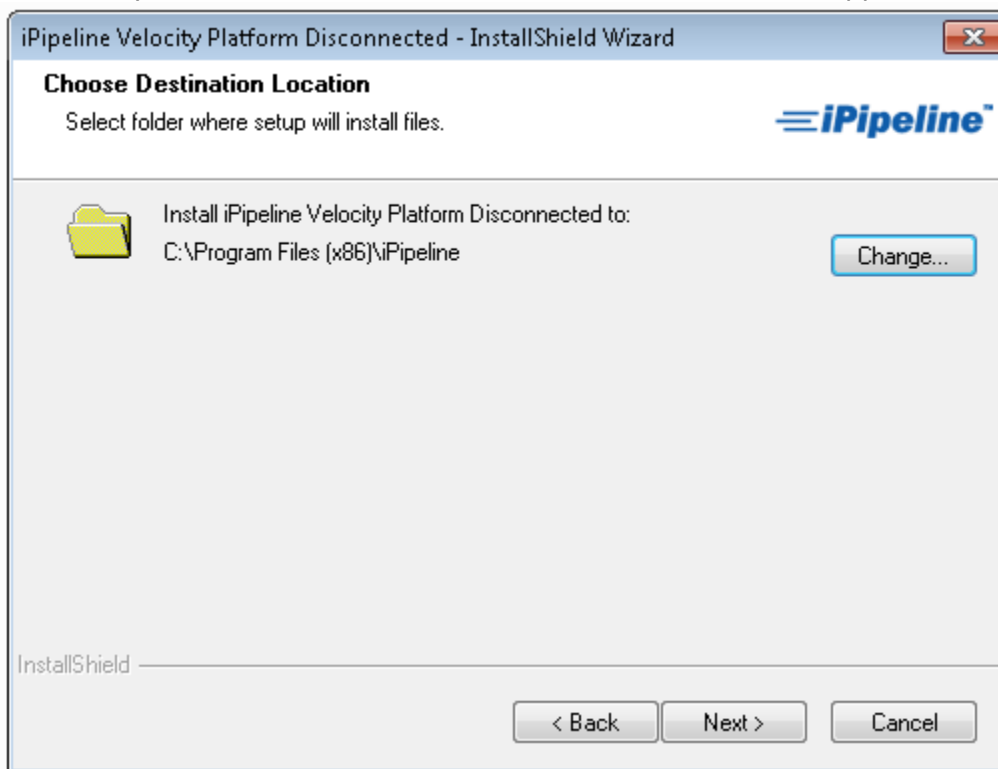
This update will not affect the client data in the database for that previous install.



Next you will be asked to review and agree to the license agreement.

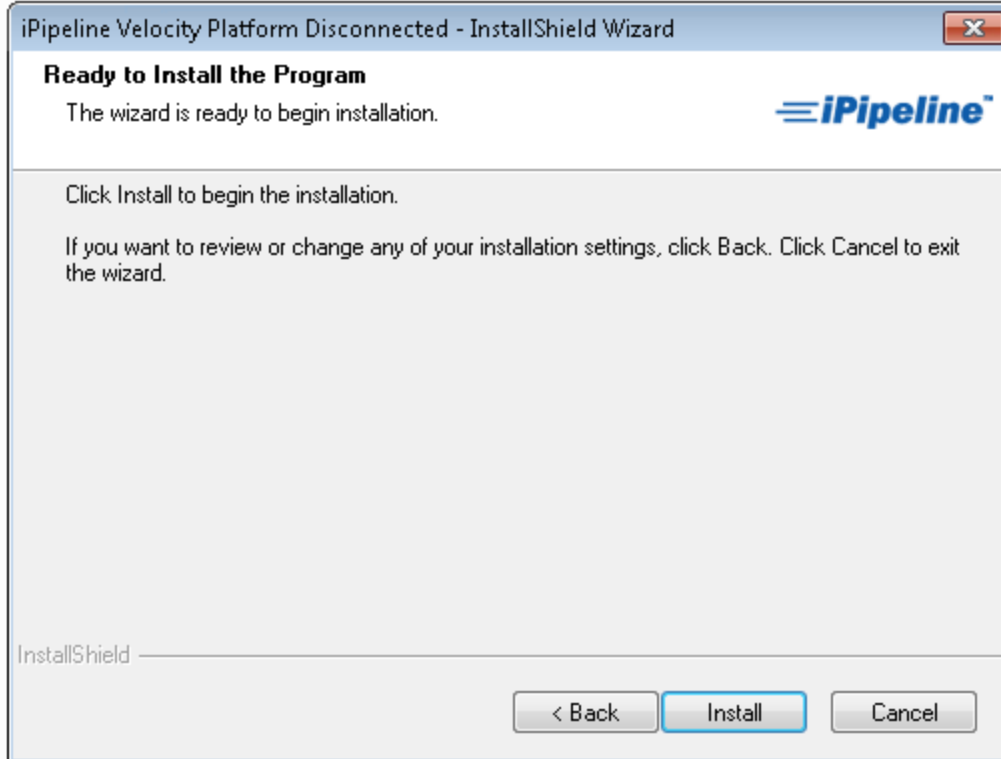


Next you will be asked to confirm the location where the application should be installed.



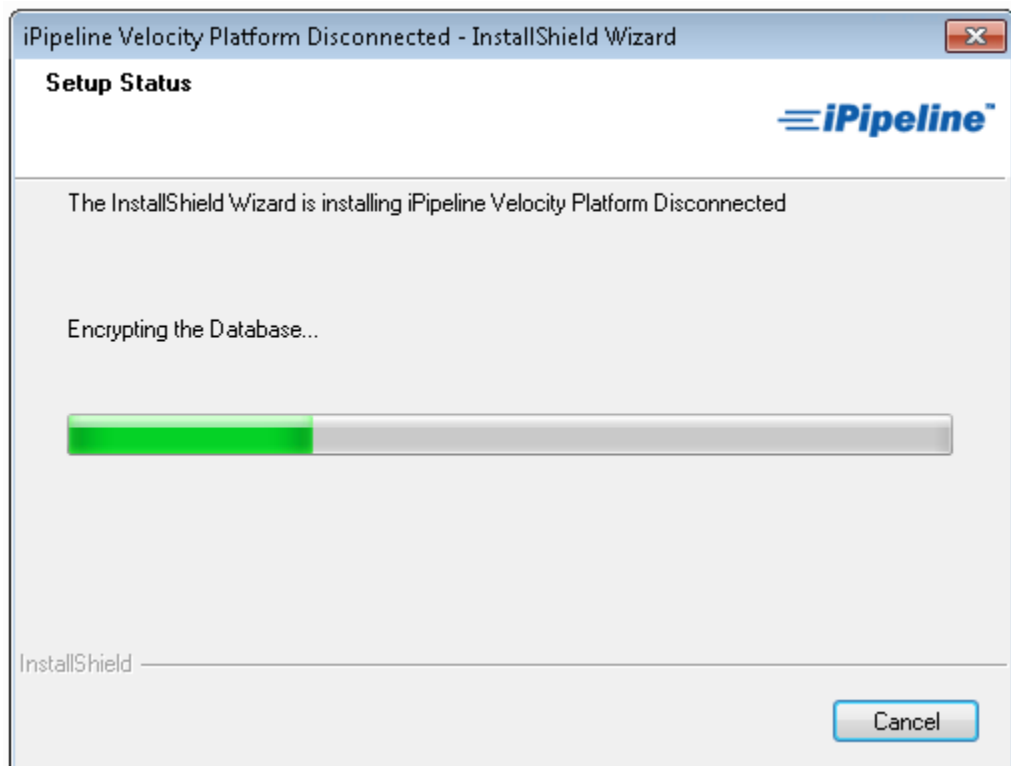
Note: The Apache HTTP Server and Microsoft SQL Server 2005 Express Edition programs are installed first and may trigger warnings by security programs asking if you wish to allow these programs the access they require. It's essential that you promptly grant the access requested.

Once you are ready to begin, select Install.

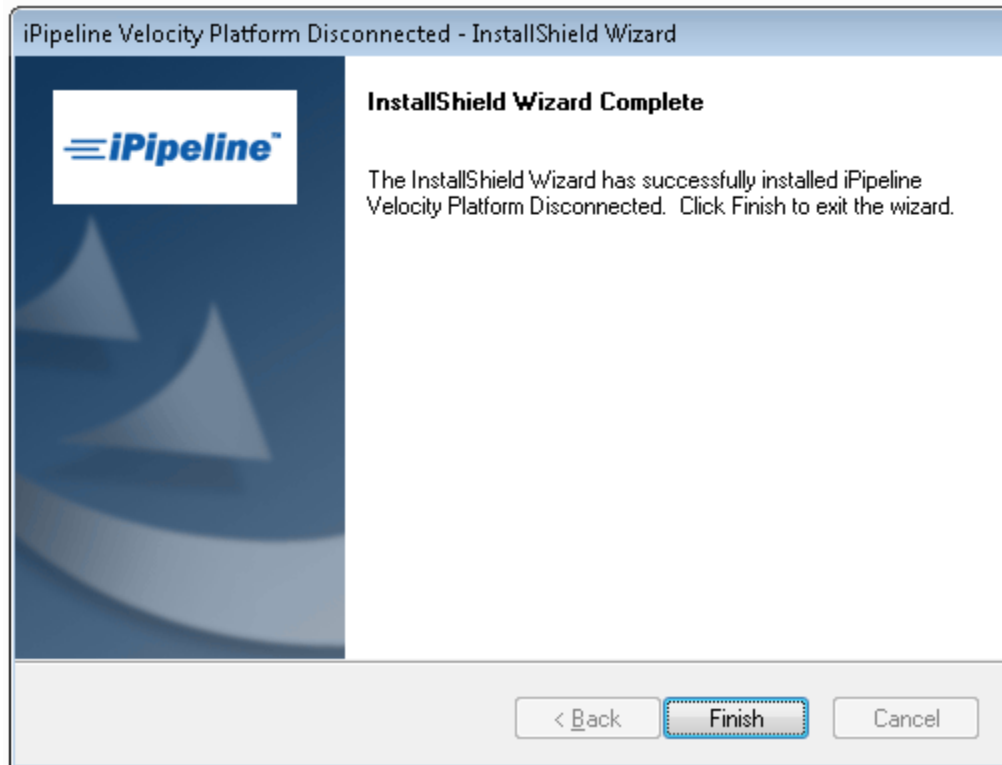


*Note:
Depending on the speed of your computer and which components need to be installed, you should allow between 10 minutes and up to 30-45 minutes for the entire installation to complete.*

The Setup Status window will update throughout the install to indicate the progress.



When the install finishes it will present you with this final screen.



Note:

If needed, you will be prompted to reboot your computer.

This reboot is required to enable the database encryption. A new install will not function until after the reboot.